



...



Bio-Logic



Bio-Logic

SP-200

12 **SP-200** ±10 , ±500 A. **SP-200,**

**SP-240** ±4 [-3;+14] **SP-200**

[ -3;+10] , 4

**SP-200**

(EIS)

**SP-200.** 10 7 (

1 4 ).

( 1 76 ).

**SP-200**

	<b>SP-200</b>	<b>SP-240</b>
■	: ±12	-3, +14
■	: ±10	-3, +10
■ EIS	: 3 (1%, 1°)	1
	: 7 (3%, 3°)	
■	: 500	4 -1
■	760 ( )	
■	( 1 -1	76 )
■		(9 / )
■	:	(1 / )

EC-Lab,



SP-200



(1 )

1 , SP-200

10<sup>14</sup>

( )

SP-200



SP-200

( )  
( )

[ZRA-ZVC].



SP-240

SP-240

Bio-Logic

SP-200

SP-240

EIS -

Ec-Lab

SP-240  
EIS



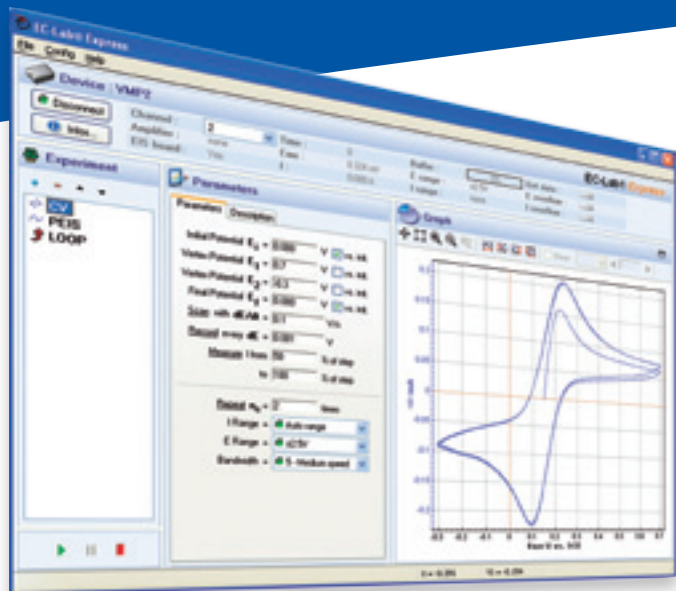
SP-200



EIS

SP-240





## EC-Lab® ExpRes:

45 100  
EC-Lab Express.

Ec-Lab Express

EC-Lab -

10

EC-Lab

## EC-Lab®:

EC-LAB

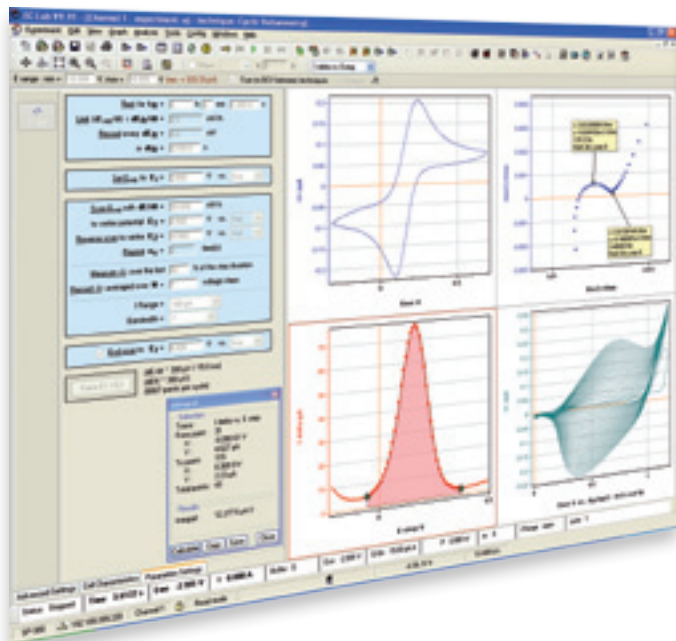
70

, EIS,

«walt»

«loop»

100



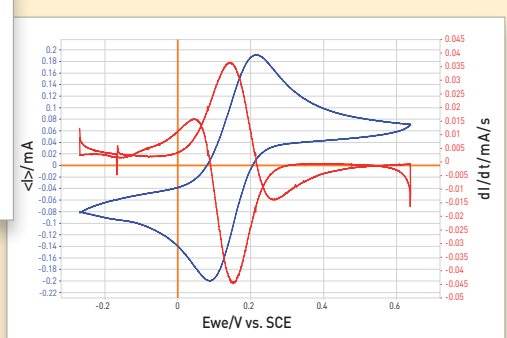
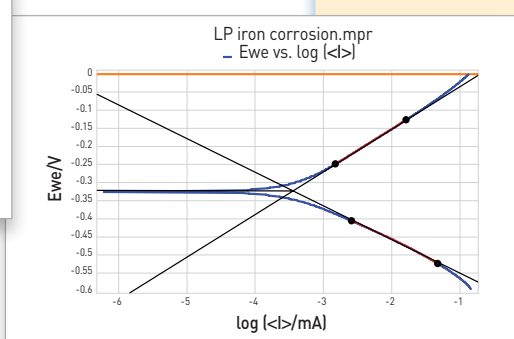
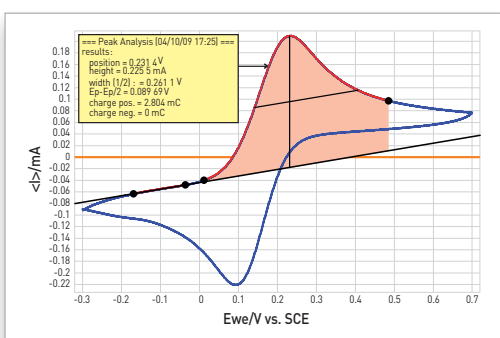
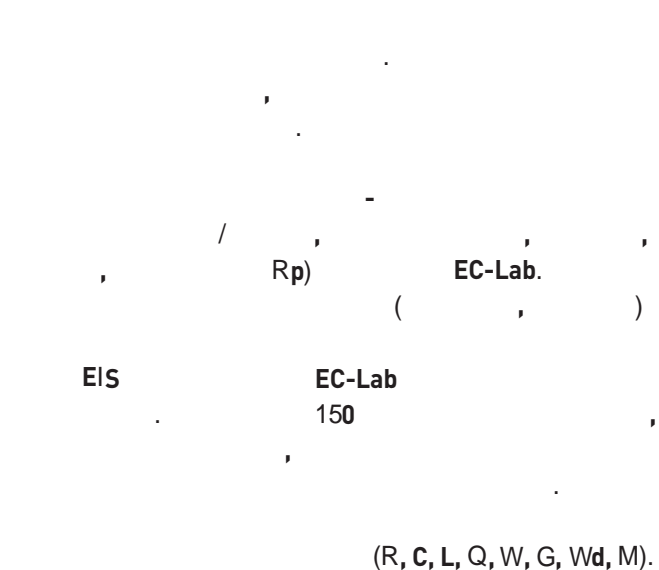
QCM,

. EC-LAB

QCM

# EC-LAB<sup>®</sup> Graphics

## EC-LAB Graphics



- Line Fit...
- Circle Fit...
- RP Fit...
- Tafel Fit...
- Integral...
- Min Max...
- Peak Analysis...
- Wave Analysis...
- Mott-Schottky...
- Filtering...
- Electrochemical Noise...
- FT{}
- Corr Sim...
- Z Fit...
- Z Sim...
- Kramers-Kronig...
- Traces Processing...
- Process Data (Cycles, R, QCM mass...)

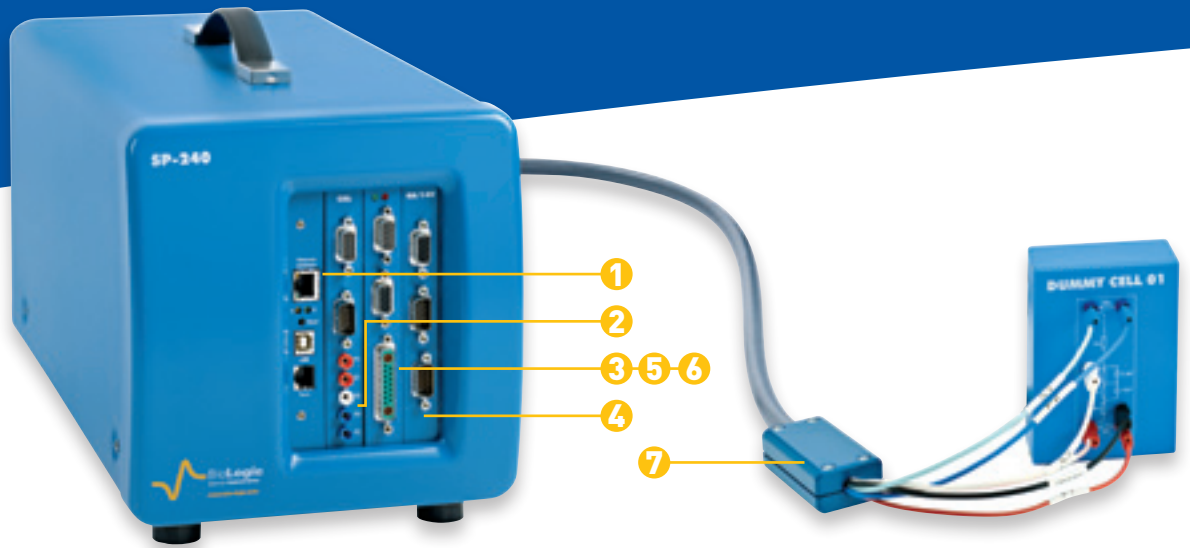
OEM

Blo-Loglc

OEM LabView

Pascal VeepRo

EC-Lab ExpRes  
 LabView



1

100 Ethernet.

IP

(700 000 )

USB

5

EIS (Z ),  
EIS 7

EIS , SP-200

2

SP-200

6

3

SP-200

9

Floating mode

SP-200

7

SP-200.

1 1 ,

76 1

4

4 A / 14

4 SP-240, -3

10 4 .



# SPECIFICATIONS

4 A/14

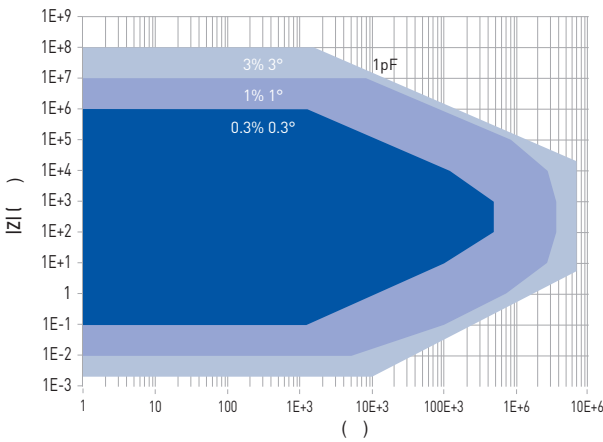
(SP-240)

+14; -3	
±4 A	
+10; -3	
(-3 )	> 8
( . . )	> 7 /
/	( . . ) < 100
0.1%	±0.007%

## ( )

10	- 7
< 10	
0.5	2.5 1
0.1% - 100%	
0.004%	
, FFT	

EIS

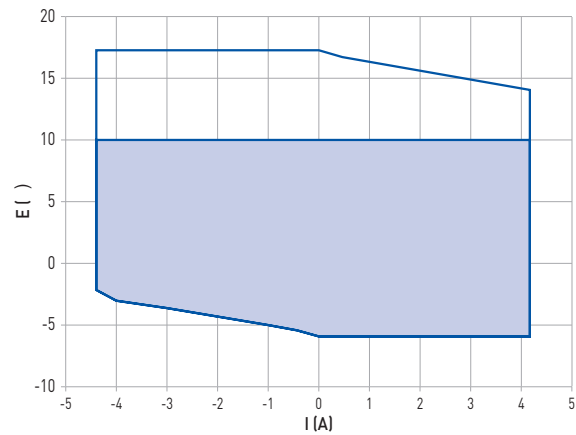


( )

±1	
0.004%	[76 ]
< ±0.1%	±0.03%
±500	- ±100
< ±0.1%	±1%
±10	±1
< ±0.2%	±2% ±100
±100 , ±1 , ±10 , ±100	
±1 , ±10	
0.004% [76 ]	
(+20°C ≤ T ≤ +30°C)	< ±0.1% ±0.03%
	±500 ±100
	< ±0.1% ±1%
	±10 ±1
	< ±0.2% ±2% ±100
	< ±1% ±2% ±10
	< ±10% ±2% ±1
100 TΩ    6	
< 1 (300 )	
5	

EIS

( 4 )



Corporate Office  
**Bio-Logic, SAS**  
 1, rue de l'Europe  
 38640 CLAIX - France  
 Tel.: +33 476 98 68 31  
 Fax: +33 476 98 69 09  
 www.bio-logic.info



" " , 220089 .  
 , 54, 4 , .26  
 / : +37517-328-18-02  
 E-mail: info@ilpa-tech.ru; www.ilpa-tech.ru